



FIRST QUANTUM MINERALS LTD.

TSX: FM; LSE: FQM



23RD | GLOBAL METALS & MINING C O N F E R E N C E



February 23 - 26, 2014

BMO  Capital Markets
Your ambition achieved.

Cautionary Note Regarding Forward-Looking Statement

Some of the statements contained in the following material are forward-looking statements and not statement of facts. Such statements are based on the current beliefs of management, as well as assumptions based on management information currently available.

Forward-looking statements are subject to various risks, uncertainties and other factors that could cause actual results to differ materially from expected results.

Readers must rely on their own evaluation of these uncertainties.

Note: all dollar amounts in US dollars unless otherwise indicated

First Quantum Minerals – At a Glance

- **A Global Company**
 - Operations and projects in 8 countries
- **High-Quality, Stable, Efficient Operations**
 - 7 operations
 - 2013 production:
 - *copper 412,281 tonnes*
 - *nickel 47,066 tonnes*
 - *gold 248,078 ounces*
 - Cash cost of production
 - *copper \$1.30/lb; nickel \$5.02/lb*
- **Strong Liquidity & Cash Flow**
 - Cash at Dec 31 '13 = \$694.5M
 - Cash from operations = \$1.4B
 - Two five-year facilities
 - *\$1.0B term loan; \$1.5B revolver; Libor + 2.75%*
 - Two \$1.14B Notes
 - *6.75% due 2020; 7.00% due 2021*
- **Industry-Leading Growth**
 - 5 major projects under development
 - Production capacities to rise to 1.1 Mtpa for copper and 110 ktpa for nickel by 2018
- **Unique Core Strength**
 - In-house project development team
 - Delivered projects at an average of 40% of the industry's average capital per tonne of capacity
- **Strong Track Record**
 - Delivered over \$2.4B in projects within 6% of budget
 - Returned a compounded annual gain of over 30% since listing



2013 – A Transformative Year

- ✓ **Successfully acquired Inmet Mining Corporation**
 - Control of the Tier 1 Cobre Panama copper project
 - Added 3 well-run, low-cost operations
- ✓ **Restructured financing and capital structure**
- ✓ **Advanced projects under development**
- ✓ **Record production at Flagship Kansanshi mine; Guelb Moghrein; and Ravensthorpe**



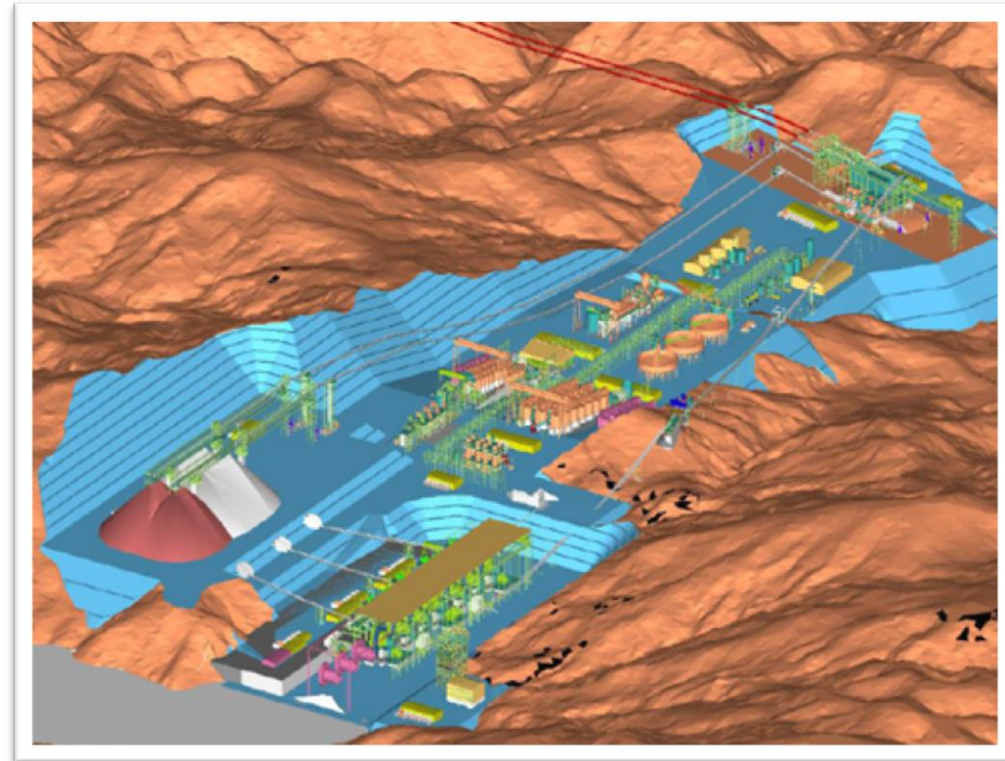
Cobre Panama – A Tier 1 Copper Project

- Acquired March 2013
- Critical review following acquisition
 - Focused mainly on Engineering, Contracts and Construction initially
 - Copied major areas of the design of the almost-complete Sentinel process plant
- Made significant changes
 - Unwound ~US\$1.7B of commitments
 - Rectified multiple deficiencies
 - Readied the site for construction
 - Connected minesite to portsite
 - Changed to an in-house, self-perform arrangement



Cobre Panama – A Tier 1 Copper Project

- A larger, more robust project
 - Installed capacity Yrs 1-10 = ~70 Mtpa
 - *17% higher than prior*
 - *Expansion up to 100 Mtpa beyond Yr 10*
 - Average annual LOM* copper production of 320,000 tonnes
 - *~ 20% higher than prior*
 - Average annual LOM by-product production
 - *100,000 ounces gold; 1,800,000 ounces silver and 3,500 tonnes molybdenum*
- Mine life of 34 years



Cobre Panama – A Tier 1 Copper Project

- Capex estimate of \$6.4 billion
 - inclusive of \$913 million incurred prior to acquisition
- Capital per installed tonne of capacity of \$17,125
 - ~25% lower than prior
- A realistic and well-defined timeframe
 - 230 KV overland power line – Q4 '15
 - 300 MW powerstation – Q1 '17
 - Tailings management facility – Q2 '17
 - Process plant construction – Q3 '17
 - Commissioning & 1st concentrate production – Q4 '17



COBRE PANAMA PROJECT – PROCESS PLANT SITE EARTHWORKS



COBRE PANAMA PROJECT – MILL PAD EARTHWORKS



COBRE PANAMA PROJECT – PROCESS PLANT STOCKPILE PAD



COBRE PANAMA PROJECT – POWER STATION AREA



COBRE PANAMA PROJECT – BREAKWATER AND MATERIAL OFFLOADING FACILITY

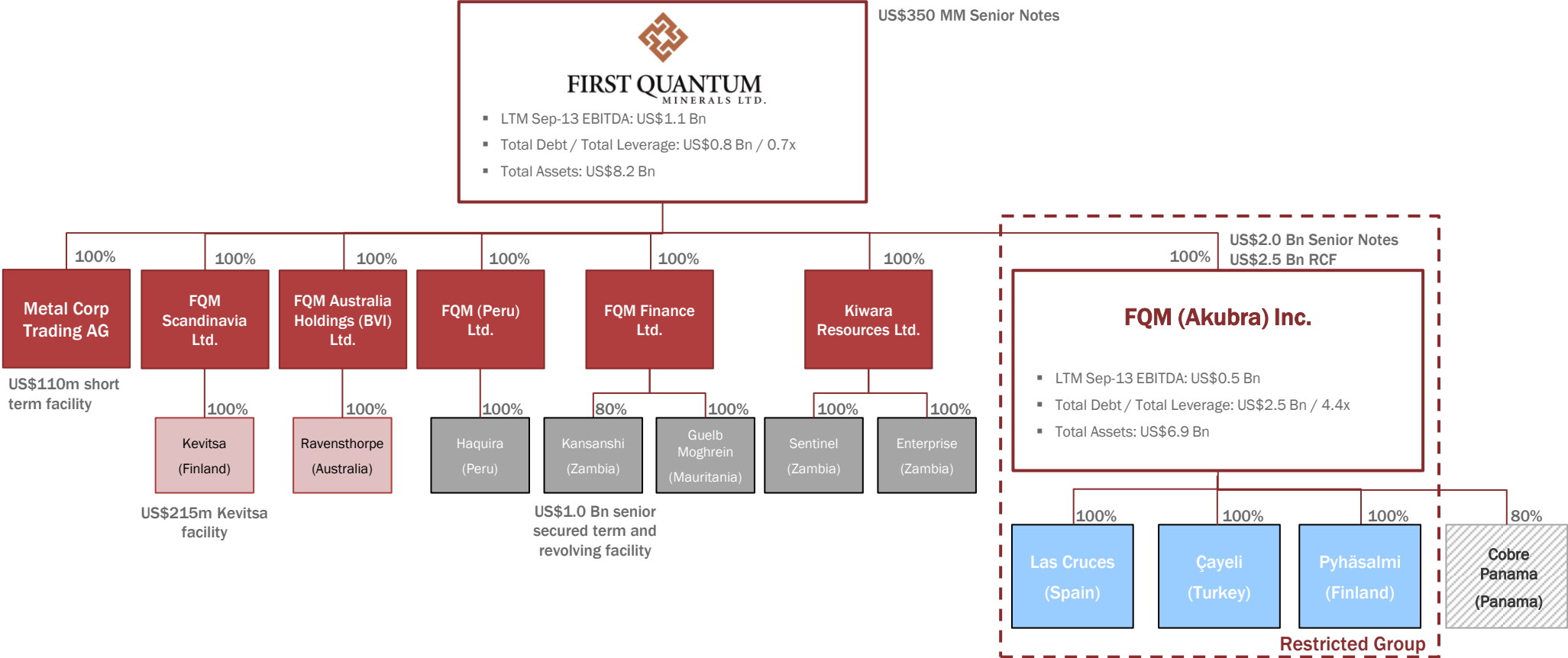


Optimizing Capital Structure & Financial Flexibility

- Refinancing the short-term US\$2.5B revolver at FQM (Akubra) with a five-year Term and Revolving Credit Facility
- Changing the FQM (Akubra) Inc. US\$1.49B 8.75% 2020 and US\$500M 7.50% 2021 notes into new 6.75% 6-year notes and new 7.00% 7-year notes
- In conjunction with the Exchange Offer, seeking covenant changes from the existing indentures to better match the Company's needs going forward
- Making certain amendments to the existing indentures of the US\$350M 7.25% Senior Notes due 2019 through a consent solicitation offer to bondholders
- Retiring the project financing at Kevitsa and Kansanshi and putting in place a \$350M unsecured facility at Kansanshi

Current Corporate Structure Chart

(Figures as of 30 September 2013)



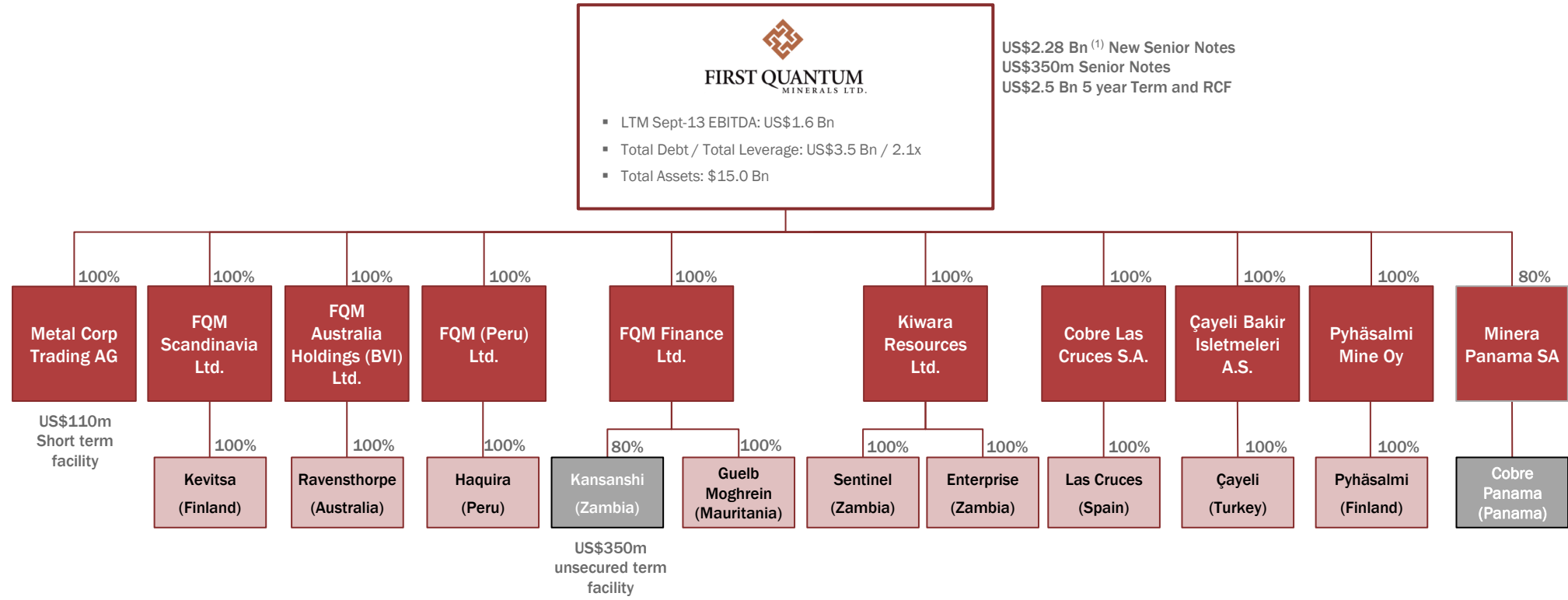
- Represents Operating Company Guarantors of the FQM notes ⁽¹⁾
- Represents Operating Company Guarantors of the FQM (Akubra) notes
- ▨ Cobre Panama is an unrestricted sub of FQM (Akubra) but a restricted sub of FQM



(1) Subordinated guarantees. Guarantor coverage ratio of 16% revenue and 8% EBITDA.

Pro Forma Corporate Structure Chart

(Figures as of 30 September 2013)



■ Represents Operating Company Guarantors ⁽²⁾

(1) Assuming all notes exchanged before early redemption date
 (2) Senior guarantees to be provided for the Credit Facility, the FQM Senior Notes and the New Senior Notes – all on a pari passu basis. Guarantor coverage ratio of 52% revenue and 44% EBITDA

Advanced Projects

Copper Smelter, Zambia

- Processing capacity of 1.2 Mtpa
 - Combination of concentrate from Kansanshi & Sentinel
 - Average copper grade 26%
- Copper production 300,000 Tpa; acid production 1.0 Mtpa
- Estimates:
 - Capital cost of US\$690M
 - Commissioning from mid-2014
- Estimated savings:
 - US\$340M - US\$510M/year
- Expansion being planned to increase processing capacity to 2 Mtpa in 2017



Advanced Projects

Sentinel Cu project, Zambia

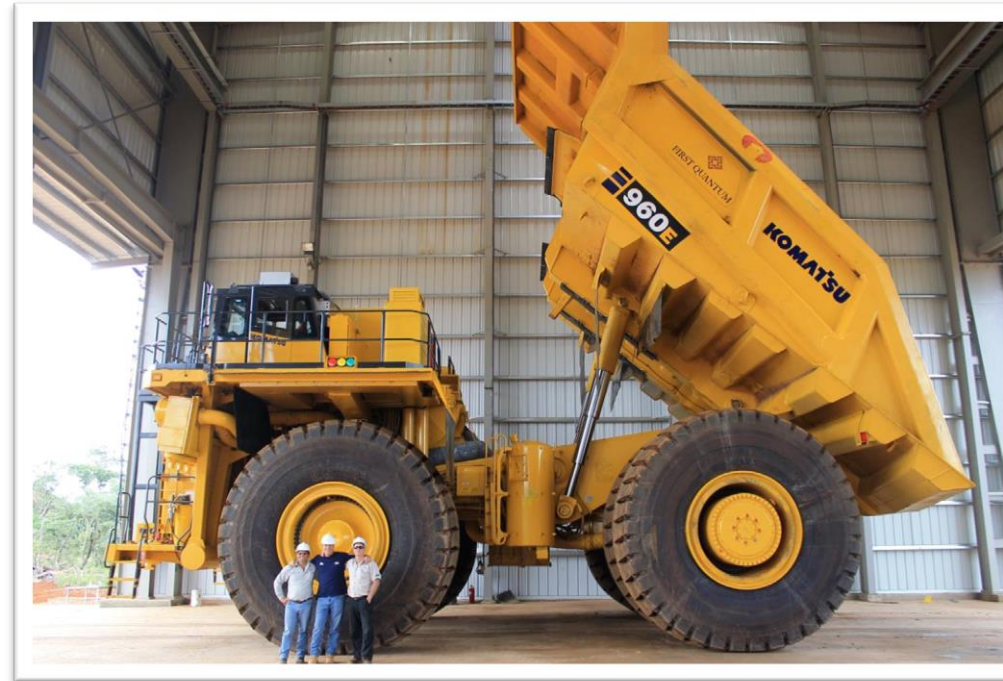
- Located ~ 140 km northwest of Solwezi, northern Zambia
- M&I resource of 1,027 Mt at 0.51% Cu grade, containing 5.2 Mt Cu
- Estimates:
 - 2.2:1 LOM strip ratio
 - >15 years mine life
 - Annual production up to 300,000 tonnes
 - US\$2.0B capex (incl. Enterprise nickel project)
 - Completion targeted for mid-2014
- Includes 4 Mtpa nickel facility; flexibility to augment copper capacity



Advanced Projects

Sentinel Cu project, Zambia

- 55 Mtpa target throughput
- 3 semi-mobile in pit crushers and assembly of large scale mining equipment
- Largest operating SAG/Ball mill trains in the world (100MW milling power)
- 265,000t of freight = 14,500 truckloads of materials
- 2 rivers to be dammed/diverted
- Life of mine TSF
- 600 km of 330kV power transmission lines from Lumwana – Kalumbila – Lusaka West
- 690 staff houses plus 590 houses in resettlement
- Development of a new town, airport, clinic, school etc....



Advanced Projects – Sentinel

100MW Milling – 2 x 40' SAG Mills + 2 x 28' Ball Mills



Advanced Projects – Sentinel Senior Housing



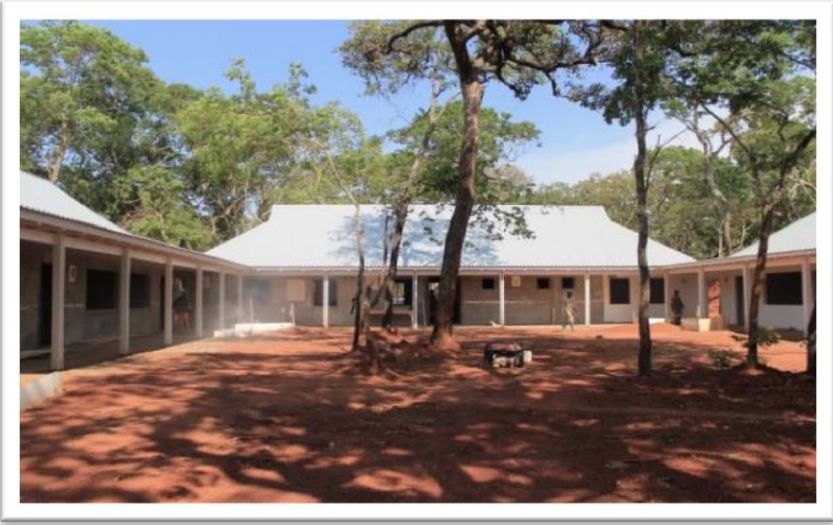
SPORTS FACILITY 04-NOV-2013



SENIOR HOUSING - SINGLES 31-MAR-2013



SENIOR HOUSING AREA 28-FEB-2013



TRIDENT PREPARATORY SCHOOL 05-NOV-2013

Advanced Projects – Sentinel Affordable Housing



AFFORDABLE HOUSING LAYOUT



TEACHER'S HOME 3-JAN-2014



TRUST SCHOOL 05-NOV-2013



COMPLETED 4-BEDROOM HOUSE 3-JAN-2014

High-Quality, Stable Operations

Kansanshi Cu-Au mine, Zambia

- Located near Solwezi in the north western Province of Zambia
- First production in 2005
- Open pit mining
- Flexible ore treatment to allow for variation in ore type :
 - sulphide circuit; oxide circuit; gold facility
- As at December 31, 2012, the estimated mine life was ~17 years
- Workforce = ~1,900



High-Quality, Stable Operations

Kansanshi Cu-Au mine, Zambia

- 2013 record production reflects capacity expansion
 - 270,724 tonnes of copper
 - 167,395 ounces of gold
 - C1 cash cost of \$1.38/lb copper
- Multi-phase capacity expansion project underway
 - **2012 - 2015**
60% increase in overall production capacity
 - **2012 - 2014**
130% increase in oxide production capacity
 - **2014 - 2017**
90% increase in sulphide production capacity

Expansion Project	Capacity	Completion	Estimate Cost (US\$M)	Production Impact
Oxide	7.2 Mtpa	Complete	34	Copper: 10,000 - 15,000 Tpa
Oxide	14.5 Mtpa	Complete	268	Copper: 60,000 - 75,000 Tpa
Smelter	1.2 Mtpa	2014	690	Smelter Acid - 1.0 Mtpa
Sulphide	25 Mtpa	2017	565	Copper: 60,000 - 70,000 Tpa

High-Quality, Stable Operations

Guelb Moghrein Cu-Au mine, Mauritania

- 100% ownership
- Located 250 kilometres northeast of the nation's capital, Nouakchott
- As at December 31, 2012, the estimated mine life was ~ 9 years (including stockpiles) based on current operations
- First production in 2006
- Workforce = ~1,170



High-Quality, Stable Operations

Guelb Moghrein Cu-Au mine, Mauritania

- Record production in 2013
 - 37,970 tonnes of copper
 - 58,191 ounces of gold
 - C1 cash cost of \$1.58/lb copper
- Focused on improving plant availability
- IOCG type deposit - structure and mineralogy has common features with other IOCG deposits elsewhere in the world
- Magnetite plant project:
 - In detailed design stage
 - Estimated capex of \$50M
 - Expected annual production of 1M - 2M tonnes of 69% Fe magnetite concentrate
 - Expected start up in mid-2014
 - Expected to extend mine life through retreatment of tailings dam



High-Quality, Stable Operations

Ravensthorpe Ni mine, Australia

- Acquired as a decommissioned plant in 2010
- First production within 20 months of purchase
- Estimated mine life of 32 years
- Commercial production declared Dec 2011
- Workforce = ~428
- Record performance in 2013
 - 38,103 tonnes of contained nickel
 - C1 cash cost of US\$4.99/payable lb



High-Quality, Stable Operations

Kevitsa Ni-Cu-PGE mine, Finland

- Built, commissioned and started commercial operations within 36 months of board approval
- Estimated mine life of 29 years
- Commercial production declared August 2012
- Workforce = ~337
- Further potential
 - Process optimization
 - Approval to increase throughput to a maximum of 10 Mtpa from 5.5 Mtpa
 - Public hearings & inspections held in September; decision expected within 6 months



High-Quality, Stable Operations

Las Cruces Cu mine, Spain

- Acquired in March 2013
- Estimated mine life of 9 years; potential for extension
- Current average reserve grade of 5.4% copper
- Workforce = ~240 direct employees; 574 contractors
- Annual production capacity – 72,000 tonnes of copper cathode
- 2013 cash cost of US\$1.14/lb



High-Quality, Stable Operations

Çayeli Cu-Zn mine, Turkey

- Acquired in March 2013
- Estimated mine life of 6 years with potential for an additional 3 years
- Average grade of 3.1% copper and 3.6% zinc
- Workforce = ~472 employees
- 2013 performance:
 - 31,510 tonnes of copper
 - 43,097 tonnes of zinc
 - C1 cash cost of US\$0.76/lb copper



High-Quality, Stable Operations

Pyhäsalmi Cu-Zn mine, Finland

- Acquired in March 2013
- One of the most efficient underground mines in the world
- Estimated mine life of 6 years
- Average grade of 1.1% copper and 1.9% zinc
- Workforce = ~203 employees
- 2013 Performance:
 - 14,854 tonnes of copper
 - 21,679 tonnes of zinc
 - 825,821 tonnes pyrite
 - C1 cash cost of US\$0.14/lb copper



Strong 2013 Results

- **Production up**
 - Copper up 34% to 412,281 tonnes
 - Nickel up 28% to 47,066 tonnes
 - Gold up 23% to 248,078 ounces
- **Cash cost lowered**
 - Copper lowered by 13% to \$1.30/lb
 - Nickel lowered by 15% to \$5.02/lb
- **Comparative net earnings of \$539.4M or \$0.96 per share, inclusive of:**
 - \$69M or \$0.12 per share of unfavorable, recurring acquisition-related adjustments
 - Unfavorable impact of \$313.0M due to lower metal prices



Full Year 2014 Guidance

- **Production**

- Copper between 418,000 and 444,000 tonnes
- Nickel between 42,000 and 47,000 tonnes
- Gold between 221,000 and 246,000 ounces
- Zinc between 59,000 and 65,000 tonnes
- Palladium and platinum between 22,000 and 24,000 ounces each

- **C1 cash cost**

- Copper between \$1.32 and \$1.48/lb.
- Nickel between \$4.40 and \$4.90/lb.

- **Capital expenditures**

- \$2.1B inclusive of approximately \$600M at each of Cobre Panama and Sentinel





FIRST QUANTUM MINERALS LTD.

February 2014

